

The logo for 'repro' features the word in a lowercase, sans-serif font. The letters 're' are in a light blue color, 'p' is in a light green, and 'ro' is in a light orange. A thin white line curves from the top of the 'o' towards the right.

Reproductive decision-making
in a macro-micro perspective

REPRODUCTIVE DECISION- MAKING IN A MACRO-MICRO PERSPECTIVE

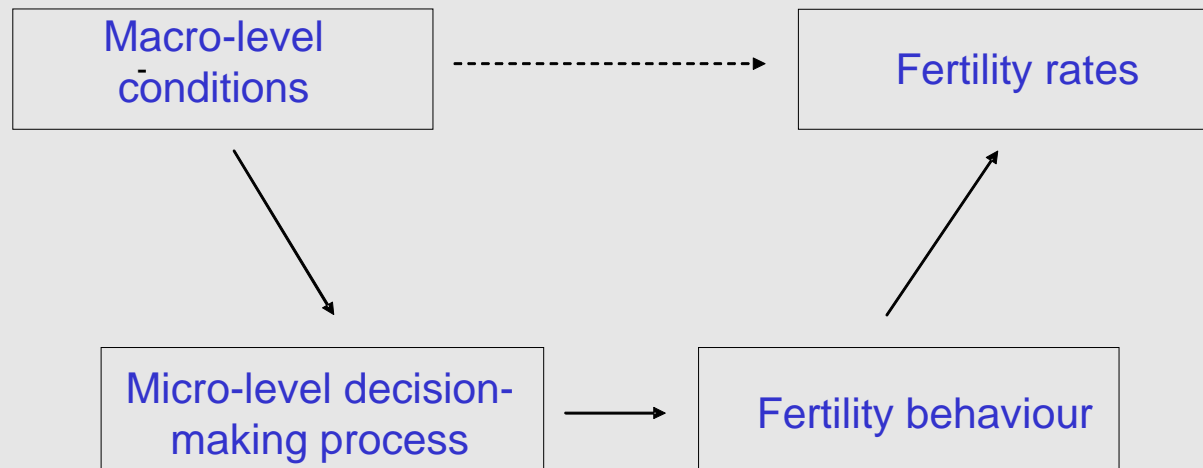
Dimiter Philipov

REPRO

- Collaborative project, FP 7
- Consortium: 9 partners from AT, BG, FR, GER, HU, IT, NL, NW, UK
- Duration: 3 years

MAIN OBJECTIVE:

“To upgrade the existing knowledge and to generate new scientific and policy-oriented knowledge on the factors that drive changes in the birth rates and influence the reproductive decision-making of contemporary Europeans.”



A macro-micro model of fertility and its determinants

1. THE MACRO- LEVEL

- 1.1. Comparative analyses of fertility trends in European countries by age, sex, parity, marital status, ...
- 1.2. Comparative analyses of family policies in Europe
- 1.3. Construction of databases for policies and for fertility

1.3 HUMAN FERTILITY DATABASE

- Partners initialize the construction of the HFDB for at least three countries. Includes data processing and creation of a methods protocol.
- Further on, develops as a joint project of the Max-Planck Institute for Demographic Research and the Vienna Institute of Demography.
- Similarity with the HMDB (mortality).
- Will continue after end of REPRO.

2. THE MICRO LEVEL

2.1 DECISION-MAKING TO HAVE A CHILD

- Theoretical background: theory of planned behaviour, elaborated in social psychology.
- Requires specific operationalization.
- Data available, GGS.

2.2 FROM INTENTIONS TO BEHAVIOUR

- A study of realisation of intentions to have a child
- Builds on the availability of panel data:
 - First panel informs about the intentions
 - Second panel informs about their realisation or postponement
- Data available for all participating countries

2.3 QUALITATIVE ANALYSES

- Provide detailed information which cannot be collected with large-scale surveys.
- Qualitative interviews available for 4 partners

3. THE MACRO-MICRO PERSPECTIVE

- Main tools: multi-level models
- Specific data requirements:
 - Micro-level data (surveys, interviews)
 - Macro-level qualitative database, part of GGP (maintained at MPIDR)

4. POLICY IMPLICATIONS

Main expectations refer to findings about

- obstacles that people experience for the realisation of their intentions to have a child
- Preferences not to have a/another child

5. DISSEMINATION

- To policy-makers
- To the research community
- To the general public