

The logo for 'repro' features the word in a lowercase, sans-serif font. The letters 're' are blue, 'p' is green, and 'ro' is orange. A white line graphic starts from the bottom of the 'o' and curves upwards and to the right, ending near the top of the 'p'.

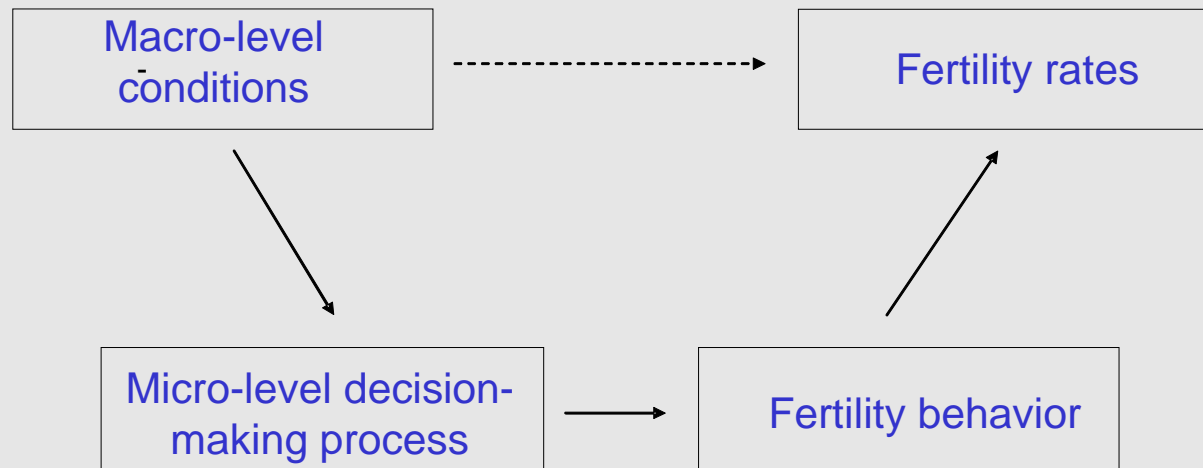
Reproductive decision-making
in a macro-micro perspective



REPRODUCTIVE DECISION- MAKING IN A MACRO-MICRO PERSPECTIVE

REPRO

- Collaborative project, FP 7 at the EC
- Consortium: 9 partners from At, Bg, Fr, Ger/Swi, Hun, Ita, Ne, Nor, UK
- Duration 3 years, as of February 2008



A macro-micro model of fertility and its determinants

1. THE MACRO- LEVEL

1.1. Data collection:

- Initiation of Human Fertility Database (*VID, MPI*)

www.humanfertility.org

- Macro-level database on fertility and family policies; includes OECD countries

<http://www.oeaw.ac.at/vid/repro/assets/docs/Databases.pdf>

(199 pages)

1.2. Societal norms of fertility behavior

1.3. Comparative analyses of fertility and policies.

2. THE MICRO LEVEL

2.1 DECISION-MAKING TO HAVE A CHILD

- Theoretical background: theory of planned behavior
- Requires specific operationalization
- Data available, GGS.

2.2. FROM INTENTIONS TO BEHAVIOUR

- A study of realisation of intentions to have a child
- Builds on the availability of panel data

Illustration:

- Realizers
- Postponers
- Refusers

2.3. QUALITATIVE ANALYSES

- Qualitative interviews available for 6 partners
- Achieve a typology of individual orientations and life course contingencies leading to diverse fertility intentions
- Map life course patterns leading to realisation of intentions
- Evaluate the appropriateness of the TPB

3. THE MACRO-MICRO PERSPECTIVE

- Understand better differences across Europe in
 - perceived norms concerning fertility-related behavior
 - intentions concerning fertility-related behavior
 - timing of entry into parenthood and the number of children people have

4. POLICY IMPLICATIONS

- Outline the policy environment of fertility decisions and births in Europe
- Draw policy implications for fertility decisions
- Identify potential directions for policy enhancement